

BERNADETTE CURTIN

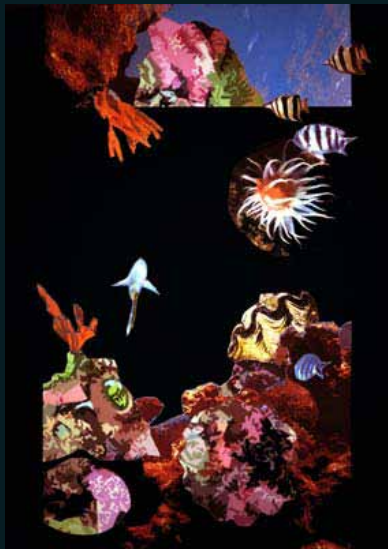
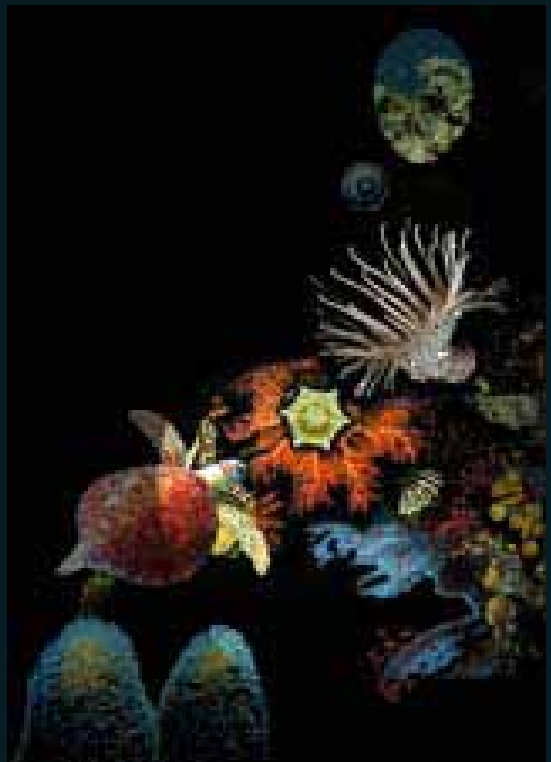
I live at Myocum, overlooking the beautiful Myocum valley and across to Koonyum Range, with Mt Warning in the distance.

The current project I am developing is a series of underwater images influenced by a trip to Ningaloo Reef at Coral Bay in Western Australia, as well as the Great Barrier Reef and Julian Rocks near Byron Bay.

The habitats of Cape Byron Marine Park include rocky reefs and coral communities as well as sandy beaches and river estuaries. Julian Rocks and the mouth of the Brunswick River are two locations where a variety of underwater life can be found.

Marine life includes many species of dolphins, seaweeds, turtles, sea anemones, molluscs and coral formations. Loggerhead turtles and green turtles are two species which are considered to be under threat.

In this series of paintings and digital prints I am responding to the fragility and diversity of reef forms and sea life in a playful and inventive way, constructing a visual imaginary world of colour and pattern.



Email: bernadettecurtin@linknet.com.au

Websites: www.bernadettecurtin.com
www.luxfordart.com.au