

June-July 2009

Promoting regional biodiversity values through art

Caldera Art 09 update

All Artfest space allocated

The response from artists for CA09 participation has been excellent, with all the available 150 metres of display space now allocated. Just over eighty artists from all around the region, and Brisbane, will be exhibiting work at the **Artfest in October**. It's particularly pleasing to see that a good variety of media and styles, from both professional and amateur artists will be represented.

All enquiries to info@calderaart.org.au



Katherine Castle (CA09 participant)
with Aust Geographic film crew
in the Border Ranges NP

CA09 judging panel appointed

The CA09 management committee is pleased to announce the judging panel for this year's awards:

Kate McKenzie (judging panel chair and TNAA08 judge)
Foreshore Reserves Co-ordinator, Gold Coast City Council
Bronwyn Davies
Arts & Cultural Co-ordinator, Scenic Rim Regional Council
Peter Stone
Richmond Landcare Services, sculptor.
Ray Richardson
Founder Tweed PhotoArts, photographer

The Centre,
Scenic Rim
Regional Council,
Home of Caldera
Art Awards 09

All are well versed in various forms of the visual arts and importantly, have a good depth of knowledge of the region's biodiversity and natural environment values.



Partnerships

The CA09 committee is actively engaging further partners (both government agencies and businesses) for this year's events program, and to assist in the long term future of Caldera Art.

With the assistance of Claire Masters and Tweed Landcare Inc, the **Nature Conservation Trust NSW** has been engaged as an Associate Partner.

www.nct.org.au

Many thanks to all involved.

Copies (either electronic or paper) of the **CA09 Partnership Proposal** are available by contacting CA09 at info@calderaart.org.au

nature
conservation
trust

OF NEW SOUTH WALES



Information for CA09 artists

Entry criteria and timelines have now been sent out to participating artists. A very **comprehensive list of references** to all manner of resources dealing with local, regional, and national environmental matters (prepared by John Turnbull TSC Bushland officer) matters is available from info@calderaart.org

Funding

An application to assist CA09/10 is currently being prepared for the **NSW Dept State and Regional development (DSRD)** under the Community Economic Development Program. Emphasis is being placed on the nexus with *Australia's Green Cauldron* and the proposed Caldera Art Trail.

An expression of interest has been forwarded to the **NSW Environmental Trust** for funding under the Env. Education Program (2010 >). The EoI was prepared in collaboration with Tweed Shire Council's Natural Resource Management unit.

Northern Rivers Arts and CA are currently engaged in groundwork for an application to **Regional Arts NSW** under the Regional Arts Fund (RAF).



Caldera Artfest film presentations

CA is fortunate to have some world-class wildlife cinematographers presenting films of the region's superb biodiversity and landscapes at the Artfest.

David Warth has probably the best footage of the Albert's Lyrebird (and other Lamington Plateau fauna) on his latest DVD *Rainforests – the Secrets of Life*.

Phil Lomas has travelled the world for the likes of BBC Natural History, National Geographic and the Discovery Channel, but the Gondwanan rainforests of this region still provide the greatest attraction. He has contributed to the pioneering of high definition production in Australia with his superb HD footage of wildlife and the natural landscape.



www.naturescapeHD.com

Caldera Art Website

Thanks to the fine efforts of **Denise Scott** and **Fiona Munro**, the CA website will be up by June 10th. Westnet have been engaged as the hosting agency.

The site will feature a variety of links including an Artists' Gallery (still in its emerging stages). Enquiries are welcome from artists to appear on this page.

Many thanks also to **Stephen Coates** for the CA logo design at such short notice.



www.calderaart.org.au

Other Awards and Exhibitions

Countryscapes 2009

Now in its seventh year, the \$35,000 Country Energy Art Prize for landscape painting (now called Countryscapes) was launched at the **Lismore Regional Gallery**. Entries are **open till 24th July** with the exhibition of finalists to be held in Lismore from 5th Nov to 12th December.

At the launch, Craig Murray, Country Energy managing director stated that the power of our landscape is fresh in our minds, from land devastated by floods and fire, to those still in drought...."we're seeing both the beauty and cruelty of the land".

This competition has produced a reputation for attracting anything but traditional landscape works.

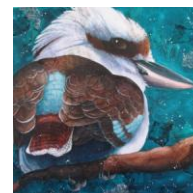
www.countryenergy.com.au



2008 winner Gail English
Last year's crops

Renee TremI will be part of a group exhibition at Kiln Gallery, Paddington QLD, as part of their winter showcase "Anthology". The opening coincides with the Paddington Precinct Artwalk on Sat 6 June from 4-8pm.

For more info on the artwalk <http://artabase.net/exhibition/1368-paddington-gallery-precinct-winter-gallery-walk>



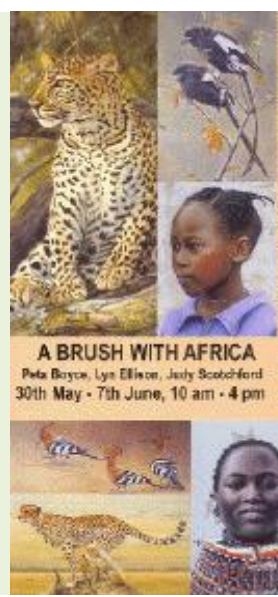
The Watcher Renee TremI TNA08 finalist

A Brush with Africa

Although finishing on Sunday June 7th, this is a superb exhibition by QWASI members, Lyn Ellison, Peta Boyce (both Caldera Art participants) & Judy Scotchford at the Richard Randall Studio Gallery, a heritage-listed building at the Mt Coot-tha Botanical Gardens, Brisbane.

The Art of Conservation 2009

A wonderful achievement for **Peta Boyce, Lyn Ellison** and **Chris McClelland** who have all had paintings chosen in the juried exhibition "The Art of Conservation 2009: An international Exhibit of Nature in Art" at the Hiram Blauvelt Art Museum, in Oradell, New Jersey, (just out of New York), opening at the end of September. Congratulations!
www.natureartists.com



Exhibition from the 'Met' at Queensland Art Gallery

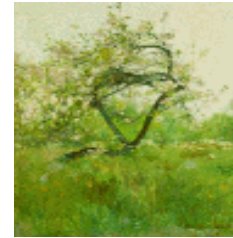
American Impressionism & Realism: A Landmark Exhibition from the Met (The Metropolitan Museum of Art, New York)

30 May - 20 Sept 2009

Featuring more than 70 American impressionist and realist paintings from The Met's collection. The exhibition will present works by some of America's foremost artists of the late 19th & early 20th centuries.

Highlighting how Australian artists responded to key artistic developments of the time, more than 30 iconic Australian paintings will also be included in the exhibition. They will include Tom Roberts, Charles Conder, Frederick McCubbin and Rupert Bunny. The exhibition will include light-filled landscapes and seascapes, magnificent portraiture and images of modern life.

For more information visit www.qag.qld.gov.au



Dry Rain - A Collection of work by Hobie Porter

Tweed River Art Gallery, until 21st June

Dry Rain presents a dramatic yet intimate glimpse into the artist's creative and environmental concerns, suggesting a vision of an unpredictable and unimaginable climate.

www.tweed.nsw.gov.au/artgallery

Accumulation 2008 oil on linen



Art 4 Earth

c.a.s.e. at Station Street Studios, in conjunction with Landcare and Byron Shire Council, announce the *Art for Earth* exhibition to celebrate World Environment Day. At Station Street Studios, cnr Mill and Station Streets, Mullumbimby. Opening 6pm to 8.30pm Friday June 5. Exhibition open 10am to 4pm, Saturday June 6 and 10am to 2pm Sunday June 7th.
More info: Leonie Jackson 0431 594 426



Spring Bloom Leonie Jackson

Annual Wildlife Art Exhibition

The Wild Side:

Inspirations from the natural world

Blue Knob Hall Gallery, Nimbin

1st October – 29th November 2009 (works submitted by 27th Sept.) Any medium.

Contact Curator : Rikki Fisher 02 6689 0001

Blue Knob Gallery and Cafe is seven kilometres north of Nimbin and a 30 minute scenic drive from Lismore or Murwillumbah. The Gallery is nestled beneath the sacred landmark of Lillian Rock, next to Blue Knob Mountain. Blue Knob Hall, built in the 1920's by the local community has been transformed into a modern Gallery and Cafe/Restaurant.

Other News

World Environment Day - Tweed

Knox Park, Murwillumbah, Sunday 14th June

A great day with displays, forums, workshops and performances celebrating World Environment Day with an opportunity to find out about joining groups tackling environment issues and contributing to community projects.

As part of this large event, **Planet Earth** are organising a community art planting. Artists are invited to contribute to an exhibition of simple environmental and festival friendly artworks. All are welcomed to join an *Ephemeral Earth Happening* - a spontaneous natural community art installation being facilitated on the day.

To get involved in the art happening contact **Heidi KeEVERS** on 0431 149 853 or heidikeevers@yahoo.com.au



World Environment Day 2009
Sustainability and Global Warming

Free Festival:
Sunday, 14 June 10 AM to 3:30 PM
Knox Park, Murwillumbah

Caldera Art will be in the Tweed Landcare display area.....hope to see you there.

Sandra collars Snow Leopard

A BBC documentary screened on ABC TV recently (Snow Leopards in Nepal) contained scenes of a radio tracking collar being (somewhat controversially) fitted to a leopard. Sandra Temple (finalist from TNA08) assisted in raising funds for this project by donating a part of the proceeds of the sale of her portrait of a Snow Leopard.

www.sandratemple.com



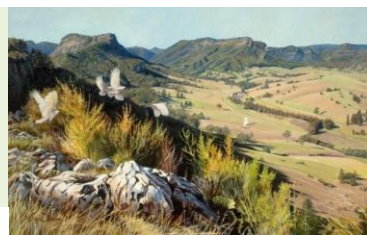
National Tree Day

Sunday 2nd August (9am – 12 noon)
Plant-out at Sweetnam Park, Food Forest, Uki
(1 km east on Kyogle road)
Ph. 0411 471147 or 66 797 333 for details
www.treeday.planetark.org



Tweed Naturally Art Awards 08 legacy

Second prize winner, Lyn Ellison, and sponsor, MWH Aust, have teamed up once again in promoting best practice in natural resource management with the use of her artwork on the cover of a relevant publication.



Brooding wilderness meets tranquil valley

About this e-News

Contributions

The submission of articles and accompanying images are most welcome. If you have a story or event that relates to biodiversity and art (esp. to our region) please email to info@calderaart.org.au
The e-News is published four times a year: April, June, August, and November
Feel free to send this e-News on to your contacts.

Many thanks to the committee and others for their assistance, to date, in planning for the CA09 events later this year :

Denise Scott, Simon Berry, Carolyn Rifello, Helen Manning, Andy Reimanis, Deb Cocks, Stephen Coates John Pumpurs, Fiona Munro, Ray Richardson, Mark Kingston and TSC NRM, Claire Masters and TLI, Ruth T (Kyogle SC), Irene and Bronwyn (Scenic Rim RC) Lesley Buckley and Jenni Funari (TSC), Joanne Gurney(Tweed Tourism).